

# GPSMAP2108PLUS

## 8" Keyed Chartplotter/Radar Combo

- With 8" SVGA sunlight-view color LCD with VGA video output
- Preloaded worldwide basemap and support Garmin BlueChart g2 vision
- Beidou-enabled, high-sensitivity GPS/GLONASS built-in receiver
- Supports all Garmin GMR marine radar
- AIS overlay on the Chart page and the Radar page
- Language support: English / Simple Chinese / Thai / Bahasa Indonesia / Burmese / Japanese



### what's new:

	GPSMAP2108	GPSMAP2108PLUS
Sensitivity receiver	1Hz GPS	1Hz Beidou, GPS/GLONASS
Waypoint	5000	12000
Route	50	200
Saved Track	30 x 1000 points	100 x 2500 points
BlueChart g2 vision	No	Yes
Auto guidance 1.0	No	Yes (only for g2 vision)
VGA out put	No	Yes
GPS module and accessory included	GA30	Optional
AIS	Yes	Yes
Max AIS Number	300	300
Chinese AIS boat/dest name	No	Yes
DSC	Yes	Yes
<b>UI Feature :</b>		
Fish area function support	No	Yes
Lat/Long Grid Display	No	Yes
Boundary line Alarm	No	Yes
<b>Radar Support</b>		
GMR xHD radar support	No	Yes
Dual range radar	No	Yes
Radar trail function	No	Yes
Range ring engrave by degree	No	Yes
EBL/VRN range ring brightness support	No	Yes
MARPA	No	Yes (with internal GPS COG)
Radar overlay	No	Yes



GMR18 HD



GMR18 xHD

Dimension	18" diameter, 9.3" high	20" diameter, 9.75" high
Water rating	IPX7	IPX7
Power consumption	33.5 W typical	30 W typical; 48 W max
Power input	10.5 to 35 V DC	11 to 35 V DC
Rotation speed (RPM)	24/30 rpm (dual rotation)	24/48 rpm (dual rotation)
Beam width	5.0° horizontal, 25° vertical	5.2° horizontal, 25° vertical
Range	20 m to 36 nm	20 m to 48 nm
Color	2 bit	8 bit
Dual range	No	Yes
Dynamic auto gain, sea filter	No	Yes
Bird mode	No	Yes

**Features:**

The GPSMAP2108PLUS keyed Chartplotter/Radar combo has an 8" color SVGA display and comes preloaded with a worldwide basemap.

**1 Hz GPS/GLONASS/Beidou**

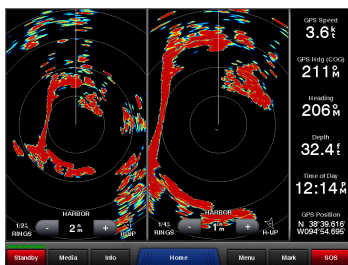
1 Hz GPS/GLONASS/Beidou provides position and heading updates 1 time per second (GPS antenna is required for GPS/Chart-plotter function)

**Expand with Radar**

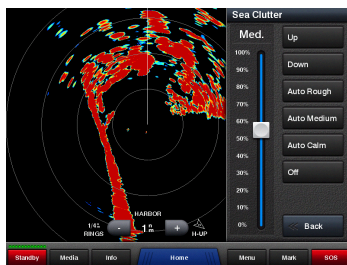
Featuring a built-in radar port, GPSMAP2108PLUS can be interfaced with Garmin's line of affordable GMR™ marine radar systems (sold separately). Whether you're adding radar now or in the future, you'll enjoy the convenience of plug-and-play installation as well as the power, range and high-definition targeting of our proven radar offerings.

**Networking**

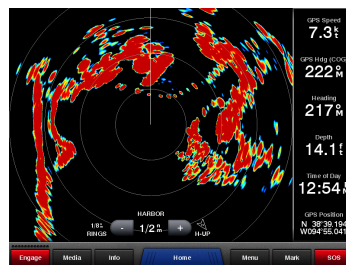
The GPSMAP2108PLUS offers select networking capabilities that allow you to share features with other compatible GPSMAP2108PLUS, such as radar, supplemental maps, and user data, such as waypoints, routes and tracks.



Dual Range Operation



Dynamic Auto Gain and Sea Filter



xHD performance in a dome



Radar Overlay

**Physical & Performance:**

Unit dimensions, WxHxD	11.2"x6.7"x2.9"(28.5x17.2x93 cm)
Display size, WxH	6.8"x5.1", 8.4"

Display resolution, WxH	800 x 600 pixels
Display type	SVGA display
Weight	3.1lbs (1.4kg)
Waterproof	Yes (IPX7)
GPS Receiver	1 Hz high-sensitivity
GPS Antenna	With external connection (BNC)
Mounting options	Bail, Flush
Power Supply Range	10-32 VDC
Power consumption	Max power usage at 10 Vdc: 14W Typical current draw at 12 Vdc: 1.1A Max current draw at 12 Vdc: 3.2A

**Features & Benefits:**

Garmin Radar compatible	Yes
NMEA 0183 compatible	Yes
Garmin Marine Network™ compatible	Yes (limit capabilities)
Supports AIS (Automatic Identification System )	Yes (NMEA0183)
Supports DSC (displays position data from DSC-capable VHF radio)	Yes (NMEA0183)
Tide tables	Yes

**Maps & Memory:**

Preloaded maps	None
Accepts data cards	1 SD™ card
Waypoints	12,000
Routes	200 (max 250 waypoints per route)
Track log	25,000 points; 100 saved tracks (max 2500 marks per tracks)

**Connections:**

NMEA 0183 input ports	2
NMEA 0183 output ports	2
Video input ports	None
Video output ports	Yes (D-Sub)
Wireless connectivity	No
Garmin Marine Network™ ports	1 (RJ45)



**GPSMAP2108PLUS In the Box:**

- GPSMAP2108PLUS with worldwide basemap
- Power/data cable
- Bail mount
- Protective cover
- Documentation